

NOTES:

1. SEE DEVICE SUMMARY (MLI 0414) FOR CONTROL DEVICE SETTINGS.
2. PRESSURE LIMITS AT THE TURBINE PURCHASER CONNECTION:
MAXIMUM PRESSURE 75 PSIG (5.27 KG/CM2)
MINIMUM PRESSURE 35 PSIG (2.46 KG/CM2)
AT A FLOW RATE OF 2.5 TO 150 GPM (9.46 TO 568 LPM).PRESSURE OSCILLATIONS ARE NOT TO EXCEED 10 PSIG IN 10 SECONDS AT STARTUP AND 8 PSIG PER MINUTE AFTER IGNITION.
3. THE VALVE IN THE CROSSOVER FILL LINE MUST BE OPEN TO EQUALIZE THE PRESSURE IN BOTH FILTERS PRIOR TO OPERATING THE FILTER TRANSFER VALVE.
4. CONICAL STRAINER WITH PRESSURE DIFFERENTIAL ALARM. STRAINER TO BE INSTALLED WITH CONE POINT FACING DOWNSTREAM. ALARM(S) FROM DIFFERENTIAL PRESSURE SWITCH INDICATES BLOCKAGE ACROSS STRAINER(S).
5. THIS PURCHASER'S CONNECTION MUST BE CONNECTED TO AN UNPRESSURIZED SUMP AND REMAIN OPEN.
6. IF LIQUID FUEL SYSTEM IS TO NOT BE UTILIZED FOR AN EXTENDED PERIOD OF TIME, THE PROCEDURE FOR LIQUID FUEL POSTPONEMENT MUST BE COMPLETED. PLEASE SEE COMPLIMENTARY DOCUMENT 372A3077 AND RED FLAG REVIEW.

REVISE ON CAD ONLY
UG PART: GF0917-0424
(SPEC: 361B5922)

2	LIQUID FUEL POSTPONEMENT	372A3077
1	SYMBOLS, PIPING	277A2415
IT.	NOMENCLATURE	IDENT
LIST OF COMPLEMENTARY DOCUMENTS		

—	—	—	REV	REV STATUS
3	2	1	SH	OF SHEETS

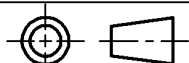
© COPYRIGHT 2003 GENERAL ELECTRIC COMPANY

PROPRIETARY INFORMATION-THIS DOCUMENT CONTAINS PROPRIETARY INFORMATION OF GENERAL ELECTRIC COMPANY AND MAY NOT BE USED OR DISCLOSED TO OTHERS, EXCEPT WITH THE WRITTEN PERMISSION OF GENERAL ELECTRIC COMPANY.

UNLESS OTHERWISE SPECIFIED	SIGNATURES	DATE	GE Power Generation GENERAL ELECTRIC COMPANY GAS TURBINE Greenville, SC	
DIMENSIONS ARE IN INCHES.	DRAWN TAMMY A PRATT	03-09-03	DIAGRAM SCHEMATIC PIPING LIQUID FUEL FIRST MADE FOR ML-7AFPEA277-1T2 0424	
TOLERANCES ON:	CHECKED FRANK J NORTH	03-09-03		
2 PL DECIMALS ± -	ENGRG PD BLACK	03-09-04		
3 PL DECIMALS ± -	ISSUED TAMMY A PRATT	03-09-04		
ANGLES ± -	QUAL CONT FRANK J NORTH	03-09-04		
FRACTIONS ± - ✓			SIZE B CAGE CODE	DWG NO 361B5922
APPLIED PRACTICES 348A9200	SIM TO: 357B2587	SCALE NONE	SHEET 1	

DISTR TO

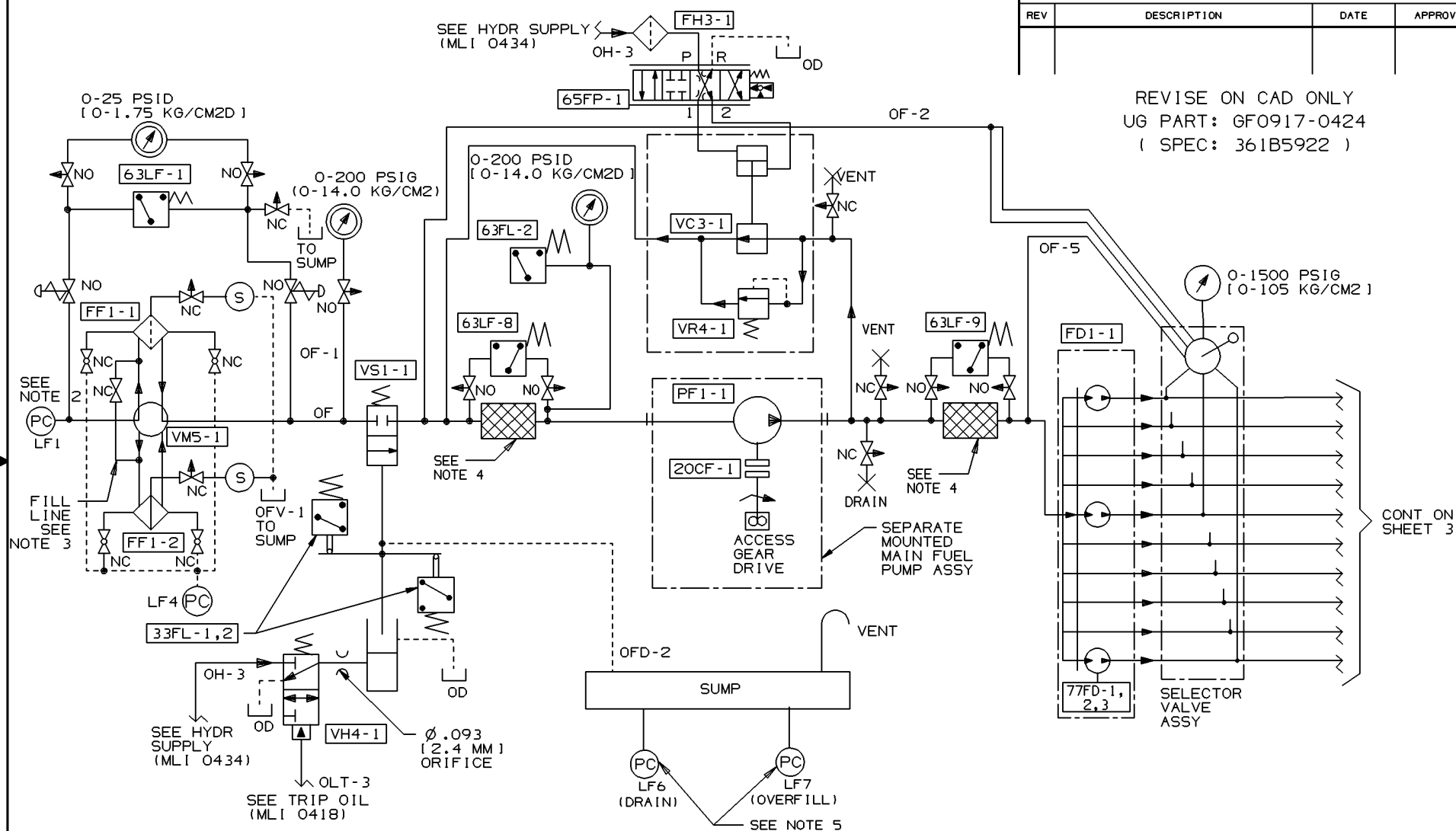
THIRD ANGLE PROJECTION



DT - 1N


REVISIONS			
REV	DESCRIPTION	DATE	APPROVED

REVISE ON CAD ONLY
UG PART: GF0917-0424
(SPEC: 361B5922)



© COPYRIGHT 2003 GENERAL ELECTRIC COMPANY

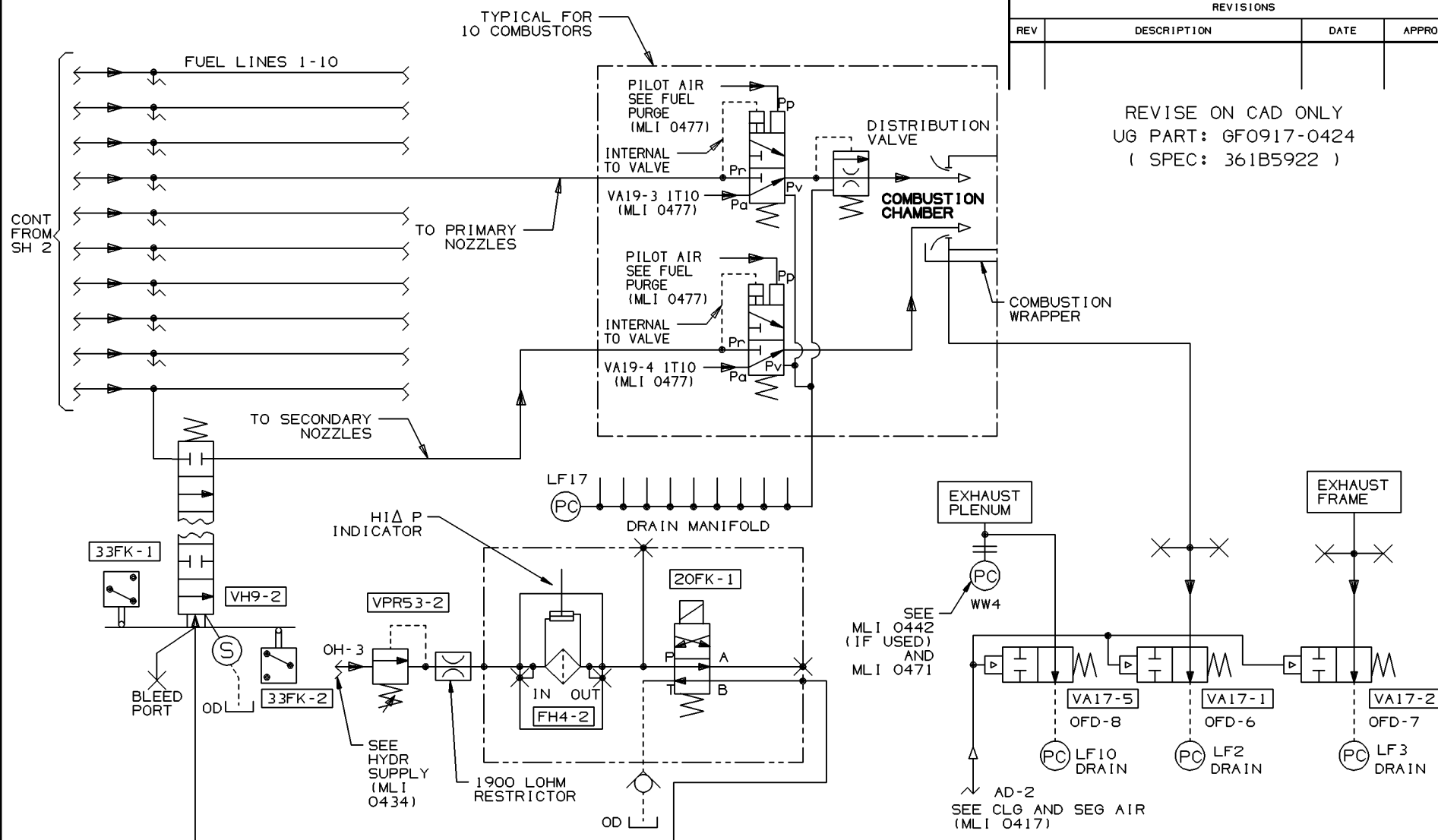
PROPRIETARY INFORMATION-THIS DOCUMENT CONTAINS
PROPRIETARY INFORMATION OF GENERAL ELECTRIC
COMPANY AND MAY NOT BE USED OR DISCLOSED TO
OTHERS, EXCEPT WITH THE WRITTEN PERMISSION OF
GENERAL ELECTRIC COMPANY.

 GE Power Generation	GENERAL ELECTRIC COMPANY GAS TURBINE Greenville, SC		SIZE B	CAGE CODE	DWG NO 361B5922
	DRAWN TAMMY A PRATT	03-09-03	SCALE NONE	SHEET 2	
ISSUED TAMMY A PRATT	03-09-04				

DISTR


REVISIONS			
REV	DESCRIPTION	DATE	APPROVED

REVISE ON CAD ONLY
UG PART: GF0917-0424
(SPEC: 361B5922)



© COPYRIGHT 2003 GENERAL ELECTRIC COMPANY

PROPRIETARY INFORMATION-THIS DOCUMENT CONTAINS
PROPRIETARY INFORMATION OF GENERAL ELECTRIC
COMPANY AND MAY NOT BE USED OR DISCLOSED TO
OTHERS, EXCEPT WITH THE WRITTEN PERMISSION OF
GENERAL ELECTRIC COMPANY.

 GE Power Generation	GENERAL ELECTRIC COMPANY GAS TURBINE Greenville, SC		SIZE B	CAGE CODE	DWG NO 361B5922
	DRAWN TAMMY A PRATT	03-09-03	SCALE NONE	SHEET 3	
ISSUED TAMMY A PRATT		03-09-04			

DISTR TO